



2012 Brazos County Fashion Show



Entry Fee: \$3.00 check made payable to Brazos Adult Leaders

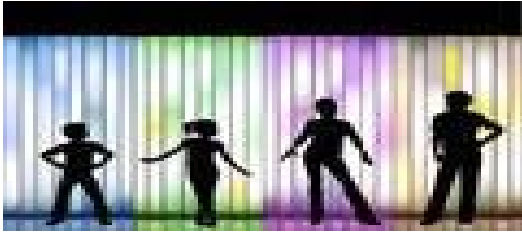
Registration deadline: March 9th at the Brazos County Extension Office

Rules/Guidelines/Forms: <http://brazos.agrilife.org/publications/4-h-and-youth-development/>

March 19, 2012

5-9 p.m.

Brazos County Extension Office
2619 Highway 21 West, Bryan



FORMS REQUIRED FOR 2012 COUNTY 4-H FASHION SHOW

** Please note that for the 2012 4-H County Fashion Show, District 9 Forms will be used and District 9 Fashion Show rules will be enforced. **

Please submit all County Fashion Show paperwork to the Extension Office no later than March 9th before 5 p.m. Paperwork submitted after 5 p.m. will not be accepted.

Form Checklist

- _____ **D9 Fashion Show Entries:** (1.) Fashion Show Entry Form; (2.) Buying Division Worksheet **OR** Construction Division Worksheet; (3.) Fashion Show Score Sheet with entry information filled in the top section. **(original plus two copies)**
- _____ **D9 Natural Fiber Entries:** (1.) Fashion Show Entry Form; (2.) Natural Fiber Division Worksheet; (3.) Natural Fiber Score Sheet with entry information filled in the top section. **(original plus two copies)**
- _____ **D9 Fashion Story Board Entries:** Participant may enter only one storyboard.
- _____ **Entry Fee - \$3 (check made payable to Brazos Adult Leaders)**
- _____ **Commentary:** A printed Brief Description (typed & approximately 50 words or less) about each entry. Include the 4-H Member's Name and County.
- _____ **Eligibility Form:** The Declaration of Eligibility Form is required and must be turned in during registration. Participants who do not turn in a completed Declaration of Eligibility Form **WILL NOT** be eligible to participate.

NOTE: Double Check to make sure the 4-H'er and parent/guardian have signed the second page of the Fashion Show Entry Form.



**Texas AgriLife Extension Service
DECLARATION OF ELIGIBILITY FORM**



*This form is requested in accordance with the requirement of
the Texas Education Code and in cooperation with the Texas Education Agency
and local public school board policies.*

PARENT/GUARDIAN/COUNTY EXTENSION AGENT – Complete This Section

In accordance with 4-H policy, provided by our local Extension office, I respectfully request (check [✓] one):

- Academic eligibility information only
- Academic eligibility information and authorization to receive an excused absence from school

Date: _____ Name of Activity: _____

Signature of Parent/Guardian: _____

I hereby certify that _____ is a member of 4-H in _____ County and is scheduled to participate in this activity representing 4-H. He/she will be under the supervision of the Texas AgriLife Extension Service faculty or agency's designated volunteer leader.

_____ Date

_____ County Extension Agent

PRINCIPAL – Complete This Section

Check [✓] one:

- I do certify that the student is academically eligible to participate in the above mentioned extracurricular activity.
- I do not certify the student because he/she is NOT academically eligible to participate in the above mentioned extracurricular activity.

Check [✓] one:

- An excused absence will be granted.
- An excused absence will **not** be granted.
- Does not apply.

Signed: _____
Principal or Designee

Date: _____

_____ Name of School

Instructions: Complete one form per activity. 4-H member should return original form to the County Extension Office.

FASHION SHOW (this date & location are for District show only)

2012 General Rules and Guidelines

Date: Friday, May 4, 2011

Location: Lone Star Convention Center, Conroe, TX

Schedule :

10:30 a.m. – 12:00 p.m.	Registration open
12:00 p.m. – 12:10 p.m.	Participant, Judges, & Superintendent Orientation
12:10 p.m.	Judging Interviews Begin (Fashion Show Contest Interview Times will posted online) (Participants will visit Style Show Orientation Table prior to leaving Judging area.)
5:45 p.m.	Line/Up for Style Show
6:00 p.m. – 8:00 p.m.	Dinner, Style Show & Awards Presentation

Entry Deadline: **April 15, 2012**

1. All Entries must be registered online on 4-H Connect by April 15, 2012.
2. All Participants must submit **THREE (3)** complete sets (original & 2 copies) of the following paperwork to their County Office and ensure that it is delivered to the District 9 4-H Office by April 15, 2012. Please use current 2012 Entry Forms posted on District 9 4-H website.
 - Fashion Show Entries: (1.) Fashion Show Entry Form; (2.) Buying Division Worksheet **OR** Construction Division Worksheet; (3.) Fashion Show Score Sheet with entry information filled in the top section.
 - Natural Fiber Entries: (1.) Fashion Show Entry Form; (2.) Natural Fiber Division Worksheet; (3.) Natural Fiber Score Sheet with entry information filled in the top section.
 - Fashion Story Board Entries: Follow Guidelines on the District 9 4-H Website.
3. Include a printed Brief Description (typed & approximately 50 words or less) about each entry. Include the 4-H Member’s Name and County.

Example: *Suited for a safari is Sarah Roth, wearing a fully washable, two piece outfit from Dorby. Sarah enjoys her food and nutrition project as well as her swine project. She has been in 4-H for 5 years and is a member of the Achievers 4-H club in McGraw County.*

Volunteers Needed to Help Judge the Fashion Show!

If interested please email Alexis Cordova, Committee Chairman, at ancordova@ag.tamu.edu

Declaration of Eligibility Form: The Declaration of Eligibility Form is required and must be turned in during registration on contest day. Participants who do not turn in a completed Declaration of Eligibility Form **WILL NOT** be eligible to participate in the District 9 4-H Fashion Show.



Buying and Construction

General Rules and Guidelines

OVERVIEW

The 4-H Fashion Show is designed to recognize 4-H members who have completed a Clothing and Textiles project. The following objectives are taught in the Clothing and Textiles project: knowledge of fibers and fabrics, wardrobe selection, clothing construction, comparison shopping, fashion interpretation, understanding of style, good grooming, poise in front of others and personal presentation skills.

PURPOSE

The purpose of the Fashion Show is an opportunity for 4-H members to exhibit the skills learned in their project work. It also provides the members an opportunity to increase their personal presentation skills.

FASHION SHOW BUYING AND CONSTRUCTION

4-H Fashion Show at the county level is an optional activity open to all 4-H members who have completed a clothing project. **The 1st, 2nd, and 3rd place entries from each of the four categories in Buying & Construction may advance to the District 9 4-H Fashion Show Contest as well as the 1st, 2nd, and 3rd place entries in each of the two Natural Fiber categories.** Senior 4-H members who have completed and won at the district Fashion Show competition can compete at the Fashion Show at State Roundup. Each district may send one contestant from each of the four categories (casual, dressy, formal, and specialty) in construction and buying and one contestant from each of the two categories (cotton and wool/mohair) in Natural Fiber.

ELIGIBILITY REQUIREMENTS

The purpose of the following requirements is to provide as fair an opportunity as possible for participation by as many outstanding 4-H members as possible. Failure to comply with the requirements will result in disqualification or penalty deductions from the final score.

1. Age Division. This contest is open to all age divisions. There will be three age divisions: Junior, Intermediate, and Senior. Age is determined as of August 31, 2011.

<u>Division</u>	<u>Ages</u>	<u>Birth date between:</u>
Junior	8 years old and in 3rd grade or 9 - 10 years	Sept 1, 2002 – Aug 31, 2001
Intermediate	11-13 years of age	Sept 1, 1999 – Aug 31, 1998
Senior	14 - 18 years of age	Sept 1, 1996 – Aug 31, 1993

2. Participants must complete a 4-H clothing project between June 15, 2011, and the county contest. All garments/ensembles to be judged must have been purchased (renting a garment is not permitted in the buying division) or constructed (construction division) during participation in a 4-H clothing project between June 15, 2011, and the county contest.

3. The Fashion Show has four categories (casual, dressy, formal, and specialty) within each division buying and construction. The 4-H member must choose a division and category at the county level and compete in that division at all levels. The entry worn at county must be the entry at the district contest. Accessories such as shoes, jewelry, hat, gloves, and scarfs may be changed, but changes must be included on the paperwork. The appropriate garment category should be determined by the style, fabric, and use of the garment. No one may change divisions or categories between county and district contests.

A. CONSTRUCTION

1. Garments may be constructed by sewing, knitting, or crocheting using new or recycled materials. Accessories may be purchased.
2. All garments worn by SENIOR Participants during the interview process must be constructed. (*Example:* garments that are visible – i.e., blouse under jumper) Not all garments worn during interview by a JUNIOR or INTERMEDIATE Participant must be constructed. (*Example:* a blouse under a jumper) However, at least ONE primary component of the outfit must be constructed by the participant.

3. SENIOR Category Descriptions

- a. **Casual**, for school and casual after-school activities, such as spectator sports, picnics, and casual dates. Examples are pants, jeans, skirts, or shorts each with a top; jumpsuit, casual or sporty dress, skirt or pants with casual/sporty jacket, school coat, and coordinated separates.
- b. **Dressy**, for ensembles worn to dressy activities such as dinner dates, theater, banquets, and job/scholarship interviews. Examples are men's and women's suits, dressy dresses, and dressy coats.
- c. **Formal**, limited to garments worn for formal evening events and formal weddings. This category includes tuxedos, formal gowns, wedding dresses, and bridesmaid dresses. Garments in the category should not be suitable for ordinary daily activity.
- d. **Specialty**, limited to athletic and special-purpose garments. Examples are band, pep squad, and cheerleader uniforms; athletic garments such as jogging suits, swim suits, leotards, and ski-wear; sleep wear; historical period garments and theatrical and circus-type costumes such as clown suits and ballet costumes. Garments in the category should not be suitable for ordinary daily activities.

JUNIOR & INTERMEDIATE Category Descriptions

- a. **Casual**, for school and casual after-school activities, such as spectator sports, picnics, and casual dates. Examples are pants, jeans, skirts, or shorts each with a top; jumpsuit, casual or sporty dress, skirt or pants with casual/sporty jacket, school coat, and coordinated separates.
- b. **Dressy**, for ensembles worn to dressy activities such as church, parties, banquets, holidays, weddings, etc.
- c. **Athletic Wear**, Clothing appropriate for extracurricular activities and clothes that are suitable for athletically active play or participation in sports. This would include jogging suits, swimsuits and cover-ups, athletic game participation attire, dance, recital outfits, band outfits, or cheerleader outfits.
- d. **Special Purpose**, Clothing intended for limited or special use. Clothing that does not fit into one of the other categories listed. This would include bed clothes such as pajamas, robes, and night gowns, and costumes such as for Halloween or theatrical performance.

B. BUYING

1. In the Buying division, comparison shopping may include department stores, boutiques or specialty stores, mail order catalogs, outlet stores, resale shops and professional seamstresses. Three **different** sources must be used—not three sections of a single store.
2. During comparison shopping, if it is determined that paying a professional seamstress (at normal hourly rate) to construct the ensemble is the best choice for purchasing a garment, list the cost of fabrics, patterns, notions, and other supplies and payment to the seamstress as the cost of the garment. Enter the appropriate information in the column headed "Garment/Ensemble Selected" on the Buying Division Worksheet.

3. All garments worn by SENIOR Participants during the interview process must be constructed. (*Example:* garments that are visible – i.e., blouse under jumper) Not all garments worn during interview by a JUNIOR or INTERMEDIATE Participant must be constructed. (*Example:* a blouse under a jumper) However, at least ONE primary component of the outfit must be constructed by the participant.

4. **SENIOR** Category Descriptions

- a. **Casual**, for school and casual after-school activities, such as spectator sports, picnics, and casual dates. Examples are pants, jeans, skirts, or shorts each with a top; jumpsuit, casual or sporty dress, skirt or pants with casual/sporty jacket, school coat, and coordinated separates.
- b. **Dressy**, for ensembles worn to dressy activities such as dinner dates, theater, banquets, and job/scholarship interviews. Examples are men's and women's suits, dressy dresses, and dressy coats.
- c. **Formal**, limited to garments worn for formal evening events and formal weddings. This category includes tuxedos, formal gowns, wedding dresses, and bridesmaid dresses. Garments in the category should not be suitable for ordinary daily activity.
- d. **Specialty**, limited to athletic and special-purpose garments. Examples are band, pep squad, and cheerleader uniforms; athletic garments such as jogging suits, swim suits, leotards, and ski-wear; sleep wear; historical period garments and theatrical and circus-type costumes such as clown suits and ballet costumes. Garments in the category should not be suitable for ordinary daily activities.

JUNIOR & INTERMEDIATE Category Descriptions

- a. **Casual**, for school and casual after-school activities, such as spectator sports, picnics, and casual dates. Examples are pants, jeans, skirts, or shorts each with a top; jumpsuit, casual or sporty dress, skirt or pants with casual/sporty jacket, school coat, and coordinated separates.
- b. **Dressy**, for ensembles worn to dressy activities such as church, parties, banquets, holidays, weddings, etc.
- c. **Athletic Wear**, Clothing appropriate for extracurricular activities and clothes that are suitable for athletically active play or participation in sports. This would include jogging suits, swimsuits and cover-ups, athletic game participation attire, dance, recital outfits, band outfits, or cheerleader outfits.
- d. **Special Purpose**, Clothing intended for limited or special use. Clothing that does not fit into one of the other categories listed. This would include bed clothes such as pajamas, robes, and night gowns, and costumes such as for Halloween or theatrical performance.

4. Once a contestant has won first place at the state contest in one division (buying or construction), he/she is no longer eligible to compete in that division.

NECESSARY FORMS

The forms listed below are required for participants in the 2012 Texas 4-H Fashion Show state contest.

- **2012 4-H Fashion Show Entry Form** (which includes project goals, activities, leadership, community service and signatures)
- **2012 4-H Fashion Show Division Worksheet** (Construction or Buying)

JUDGING CRITERIA

The contestant's Fashion Show Entry Form, Fashion Show Division Worksheet (buying or construction), modeling, and interview will be used to evaluate knowledge and skills in the following:

- Quality of project activities and written materials: 25%
- Knowledge of fiber and fabric characteristics, use, and care: 30%

- Ability to evaluate garment quality and apply knowledge: 25%
- Appearance, fit, and fashionability: 20%

A panel of judges will evaluate and score the entries based on their Fashion Show paperwork and interviews. **Presentations will not be permitted during the interview judging.** Each garment category will be judged separately. A participant receives a 5 point deduction for not following all Fashion Show requirements. This includes not completing all forms or illegible or incorrect forms.

If ties should occur, the ties will be broken using partial scores in the following order.

1. Ability to evaluate garment quality and apply knowledge subtotal score.
2. Knowledge of fiber and fabric characteristics, uses, care subtotal score.
3. Appearance, fit, and fashionability subtotal score.
4. Garment meets the competition eligibility requirements.
5. Garment is well made.
6. Garment style makes good use of the fiber and fabric characteristics.
7. Modeling, poise, and grooming.
8. Garment and accessories fashionable and appropriate.
9. Fit appropriate for the body.

Judges scores will be totaled by a tabulation committee.

Natural Fiber Contest

2012

Educational programs of the Texas AgriLife Extension Service are open to all people without regard to race, color, sex, disability, religion, age, or national origin. The Texas A&M University System, U.S. Department of Agriculture, and the County Commissioners Courts of Texas Cooperating

General Rules and Guidelines

OVERVIEW

The 4-H Fashion Show is designed to recognize 4-H members who have completed a Clothing and Textiles project. The following objectives are taught in the Clothing and Textiles project: knowledge of fibers and fabrics, wardrobe selection, clothing construction, comparison shopping, fashion interpretation, understanding of style, good grooming, poise in front of others and personal presentation skills. 4-H members participating in the Natural Fiber Contest are encouraged to study, promote and use cotton, wool, and mohair—natural fibers produced in Texas.

PURPOSE

The purpose of the Fashion Show Natural Fiber Contest is an opportunity for 4-H members to exhibit the skills learned related to Cotton and Wool/Mohair. To recognize 4-H members who do outstanding work in a clothing project that includes the study of cotton or wool, and mohair.

FASHION SHOW NATURAL FIBER

4-H members who have placed 1st, 2nd, or 3rd in the county Natural Fiber Contest may enter the Fashion Show Natural Fiber Contest at District 9 4-H Roundup. District winners in the Fashion Show category (casual, dressy, formal, specialty) in buying or construction division are no longer able to compete in the Texas 4-H Round-Up Natural Fiber Contest, unless they win the district Natural Fiber Contest. If a participant is a district fashion show buying or construction winner and a district Natural Fiber winner they will be able to compete in **both** contests.

ELIGIBILITY REQUIREMENTS

The purpose of the following requirements is to provide as fair an opportunity as possible for participation by as many outstanding 4-H members as possible. Failure to comply with the requirements will result in disqualification or penalty deductions from the final score.

1. Age Division. This contest is open to all age divisions. There will be three age divisions: Junior, Intermediate, and Senior. Age is determined as of August 31, 2011.

<u>Division</u>	<u>Ages</u>	<u>Birth date between:</u>
Junior	8 years old and in 3rd grade or 9 - 10 years	Sept 1, 2002 – Aug 31, 2001
Intermediate	11-13 years of age	Sept 1, 1999 – Aug 31, 1998
Senior	14 - 18 years of age	Sept 1, 1996 – Aug 31, 1993

2. Participants must complete a 4-H clothing project between June 15, 2011 and the county contest. All garments/ensembles to be judged must have been purchased (renting a garment is not permitted in the buying division) or constructed (construction division) during participation in a 4-H clothing project between June 15, 2011 and the county contest.

3. The Natural Fiber Contest has two categories; cotton and wool/mohair. The entry in the Natural Fiber Contest does not have to be the same entry as the Fashion Show Buying or Construction entry. The 4-H member must choose a category at the county level and compete in that category at all levels. The entry worn at the county contest must be the one worn at the district contest. Accessories such as shoes, jewelry, hat, gloves, and scarfs may be changed, but changes must be included on the paperwork. The appropriate garment category should be determined by the style, fabric, and use of the garment. No one may change divisions or categories between county and district contests.

A. COTTON

2012

Educational programs of the Texas AgriLife Extension Service are open to all people without regard to race, color, sex, disability, religion, age, or national origin. The Texas A&M University System, U.S. Department of Agriculture, and the County Commissioners Courts of Texas Cooperating

Each garment entered must contain a minimum of 60% cotton. Knowledge of fiber characteristics, production and end use is required.

B. WOOL/MOHAIR

Each garment entered must contain a minimum of:

- 60% wool and 40% other fiber.
- 60% mohair and 40% other fiber.
- 60% blend of the two fibers and 40% other fiber.
- 100% wool/mohair blend is also acceptable.

Knowledge of fiber characteristics, production and end use is required.

4. The garment selected can be constructed or purchased. A complete outfit, except for a blouse or shirt under the garment, is made of the eligible fashion fabric. Example: Jacket and pants made of wool. Shirt or blouse does not need to be made of wool. A full length coat made of eligible fashion fabric. It may be worn over a garment of any fiber content. Lining fabric, interfacing fabric, and trims are not required to meet the fiber content requirements.

NECESSARY FORMS (Use Separate forms for Natural Fiber)

The forms listed below are required for participants in the 2012 Texas 4-H Fashion Show Natural Fiber state contest.

- **2012 Texas 4-H Fashion Show Natural Fiber Entry Form** (which includes project goals, activities, leadership, community service and signatures)
- **2012 Texas 4-H Fashion Show Natural Fiber Worksheet** (cotton or wool/mohair)

JUDGING CRITERIA

If the Fashion Show Natural Fiber Entry Form and the Fashion Show Natural Fiber Worksheet do not show that the entry meets the eligibility requirements, the entry will be disqualified.

The contestant's Fashion Show Natural Fiber Entry Form, Fashion Show Natural Fiber Worksheet, modeling and interview will be used to evaluate knowledge about the fiber's characteristics, uses in apparel, and ability to apply knowledge to the selection process. The contestant will model the garment for evaluation of the appearance, fit, and fashionability. Evaluation will be by a panel of judges. The value of each set of criteria will be:

- Quality of project activities and written materials of the natural fiber of their entry: 15%
- Knowledge of fiber characteristics and uses of the natural fiber of their entry: 40%
- Ability to apply knowledge: 30%
- Appearance, fit, and fashionability: 15%

A panel of judges will evaluate and score the entries based on their Fashion Show paperwork and interviews. **Presentations will not be permitted during the interview judging.** Each garment category will be judged separately. A participant receives a 5 point deduction for not following all Fashion Show requirements. This includes not completing all forms or illegible or incorrect forms.

If ties should occur, the ties shall be broken using partial scores in the following order:

- Knowledge of fiber characteristics and uses subtotal score.
- Ability to apply knowledge sub-total score.
- Appearance, fit, and fashionability subtotal score.
- Garment is well made.

DISTRICT 9 4-H WEBSITE

<http://d94-h.tamu.edu/eventsandcontests/district-9-4-h-conference/fashion-show/>

TEXAS 4-H FASHION SHOW WEBSITE

<http://fcs.tamu.edu/clothing/4h/index.php>

District Fashion Show participants need to register on 4-H Connect and submit paperwork by April 15, 2012. Participants will be issued an interview time and times will be posted on District 9 4-H Website prior to May 4, 2011. All participants need to check-in 15 minutes before interview time on Friday, May 4, 2012.

Awards will be presented Friday, May 4th, 2012 during Style Show and Evening Events that start at 6:00 p.m.

2012 DISTRICT 9 4-H Fashion Show Entry Form
(Two separate Entry Forms are needed if entering the Natural Fiber competition)

Age Category (check one): Junior Intermediate Senior

Name: _____ Number of years in clothing project: _____

Address: _____ Phone number: _____

City: _____ State: _____ Zip code: _____

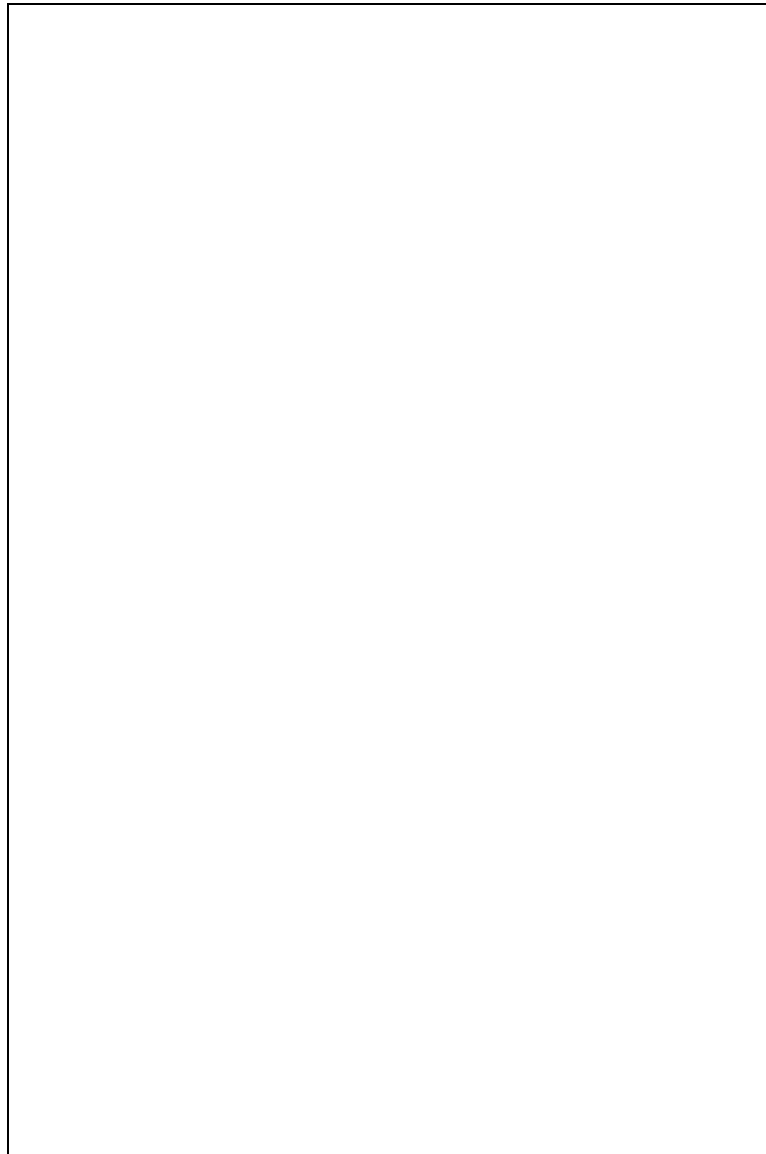
County: _____ District: _____ E-mail: _____

Division (check one): Buying Construction

Category (check one): Casual Dressy Formal or Athletic Wear Specialty or Special Purpose

Natural Fibers Competition (check one if entering): Cotton Wool/Mohair

Insert head to toe photo of participant in the competition garment. The photo **should not exceed 4" x 6"**. Photo may be electronically inserted into the document or glued in the space below.



Project Goals:

Project Activities:

Leadership (clothing only):

Community Service (clothing only):

Project Summary:

I certify that I have read the District 9 4-H Fashion Show information packet and that my entry complies with the requirements.

Contestant's Signature: _____ Date Signed: _____

I have read this form and give permission for my child to participate in the District 9 4-H Fashion Show awards program. I certify that I have read the District 9 4-H Fashion Show information packet and that my child's entry complies with the requirements.

Signature of Parent/Guardian: _____ Date Signed: _____

I certify that the 4-H member whose signature appears above has been provided a copy of the D9 4-H Fashion Show information packet and that he/she has completed a clothing project.

Signature of County Extension Agent responsible for the
4-H clothing program: _____ Date Signed: _____

2012 District 9 4-H Fashion Show
Construction Division Worksheet

Name:

County:

District:

Age category: Junior Intermediate Senior

Category (check one) Casual Dressy Sr.-Formal or Jr/Int-Athletic Wear Sr-Specialty or Jr/Int- Special Purpose

Complete both sides fully and accurately; do not write more than will fit in spaces provided. If ensemble uses more than one type of fabric, list each type separately (up to four). If more than four types of fabric are used, layer fabrics according to ensemble piece. **Do not add pages.**

Garment #1 Fabric Used

Staple a 3" X 2"
fabric sample here

Fabric type: (i.e., chambray, flannel)

Fiber content::

Garment #2 Fabric Used

Staple a 3" X 2"
fabric sample here

Fabric type: (i.e., chambray, flannel)

Fiber content::

Garment #3 Fabric Used

Staple a 3" X 2"
fabric sample here

Fabric type: (i.e., chambray, flannel)

Fiber content::

Garment #4 Fabric Used

Staple a 3" X 2"
fabric sample here

Fabric type: (i.e., chambray, flannel)

Fiber content::

Itemized list of construction expenses:

Total cost of garment:

How this garment coordinates/compliments current wardrobe:

Pattern design change/alternation made:

Construction techniques used and reasons:

Care requirements for finished garment:

Knowledge and consumer life skills learned:

2012

**2012 District 9 4-H Fashion Show
Buying Division Worksheet**

Name: _____ County: Junior Intermediate Senior
 Age Division (check one): _____ District: _____
 Category (check one): Casual Dressy Sr.-Formal or Jr./Int.- Athletic Wear Sr.-Specialty or Jr. /Int. Special Purpose

Comparison Shopping: Give information for the garment(s) purchased and two others examined during comparison shopping. Three different stores/sources must be used – not 3 selections in one store.

	Garment/Ensemble Selected	Comparison 1	Comparison 2
Description of garments compared:			
Total cost:			
Type of store where garment was examined:			
Fiber content:			
Fabric type: (i.e., flannel, corduroy)			
Care requirements:			
Construction techniques used:			

Use of garment; where to be worn:

How this garment coordinates/compliments current wardrobe:

Alterations made:

Reasons for selecting this garment and accessories instead of the two comparison garments not purchased:

Knowledge and consumer life skills learned:

**2012 District 9 4-H Fashion Show
Natural Fiber Worksheet**

Name:

County:

District:

Age category: Junior

Intermediate

Senior

Category (check one) Cotton Wool/Mohair

Complete this form fully and accurately but do not write more than will fit in the spaces provided.

Identify the fiber content of garment:

Identify fiber characteristics that are important in apparel:

Identify fabric weave of knit in garment:

Care requirements of garment:

Discuss the fiber production process:

Write a paragraph promoting your fiber:

2012 District 9 4-H Fashion Show Score Sheet

JUNIOR - Buying or Construction
 INTERMEDIATE - Buying or Construction

Judges Initials _____

Contestant Name _____ County _____

Quality Award Ribbon (circle one below)

DIVISION (circle one) BUYING CONSTRUCTION

CATEGORY (circle one) CASUAL DRESSY ATHLETIC WEAR SPECIAL PURPOSE

Blue Red White

Point Value explanation: in factors with 0-10 rating, 0 = least quality in factors and 10 = highest quality in factors.
 In factors with 0 - 5 rating, 0 = least quality and 5 = highest quality in factors.

FACTORS TO CONSIDER

Total Possible Points Score

Quality of Project activities and written materials (25%)

- Clothing and textiles activities, consumer and life skills learned, suitable for experience level 10 _____
 - Project demonstrates leadership and community service 10 _____
 - All entry forms are current and complete 5 _____
- Comments: _____

Total _____

Knowledge of fiber and fabric characteristics, uses, care (30%)

- Identification of fiber source, generic name, and characteristics 10 _____
 - Identification of fabric weave or knit, fabric type, and fabric characteristics 10 _____
 - Knowledge of garment care 10 _____
- Comments: _____

Total _____

Ability to evaluate garment quality and apply knowledge (25%)

- Garment style makes good use of the fiber and fabric characteristics and is appropriate for the intended use of the garment 10 _____
 - Garment is well made (plaids and seams match, edges smooth, hem even, closures neat, well pressed) and is a good value for it's cost (i.e. buying comparisons) 10 _____
 - Garment meets the competition eligibility requirements (division, category, complete garment or ensemble) 5 _____
- Comments: _____

Total _____

Appearance, fit and interview (20%)

- Garment is an appropriate fit for the body 5 _____
 - Garment and accessories fashionable and appropriate 5 _____
 - Modeling and presentation skills, poise, and grooming 10 _____
- Comments: _____

Total _____

Overall Score _____

2012 District 9 4-H Fashion Show Score Sheet Senior – Buying and Construction

Judges Initials _____

Contestant Name _____ County _____

DIVISION: BUYING CONSTRUCTION

Quality Award Ribbon (circle one below)

CATEGORY: CASUAL DRESSY FORMAL SPECIALTY

Blue Red White

Point Value explanation: in factors with 0-10 rating, 0 = least quality in factors and 10 = highest quality in factors.
In factors with 0 - 5 rating, 0 = least quality and 5 = highest quality in factors.

FACTORS TO CONSIDER

Total Possible Points Score

Quality of Project activities and written materials (25%)

- | | | |
|---|----|-------------|
| • Clothing and textiles activities, consumer and life skills learned, suitable for experience level | 10 | _____ |
| • Project demonstrates leadership and community service | 10 | _____ |
| • All entry forms are current and complete | 5 | _____ |
| Comments: | | Total _____ |

Knowledge of fiber and fabric characteristics, uses, care (30%)

- | | | |
|---|----|-------------|
| • Identification of fiber source, generic name, and characteristics | 10 | _____ |
| • Identification of fabric weave or knit, fabric type, and fabric characteristics | 10 | _____ |
| • Knowledge of garment care | 10 | _____ |
| Comments: | | Total _____ |

Ability to evaluate garment quality and apply knowledge (25%)

- | | | |
|--|----|-------------|
| • Garment style makes good use of the fiber and fabric characteristics and is appropriate for the intended use of the garment | 10 | _____ |
| • Garment is well made (plaids and seams match, edges smooth, hem even, closures neat, well pressed) and is a good value for it's cost (i.e. buying comparisons) | 10 | _____ |
| • Garment meets the competition eligibility requirements (division, category, complete garment or ensemble) | 5 | _____ |
| Comments: | | Total _____ |

Appearance, fit, and interview (20%)

- | | | |
|---|----|-------------|
| • Garment is an appropriate fit for the body | 5 | _____ |
| • Garment and accessories fashionable and appropriate | 5 | _____ |
| • Modeling and presentation skills, poise, and grooming | 10 | _____ |
| Comments: | | Total _____ |

Overall Score _____

2012 District 9 4-H Natural Fiber Score Sheet

Judges Initials _____

Contestant Name _____

County _____

Quality Award Ribbon (circle one below)

AGE DIVISION: Junior Intermediate Senior

Blue Red White

CATEGORY: COTTON WOOL/MOHAIR

Point Value explanation: in factors with 0-10 rating, 0 = least quality in factors and 10 = highest quality in factors.
In factors with 0 - 5 rating, 0 = least quality and 5 = highest quality in factors.

FACTORS TO CONSIDER

Total Possible Points Score

Quality of project activities and written materials (15%)

- Clothing and textiles activities adequate, show skills learned, suitable for experience level 5 _____
 - Project shows knowledge of fiber and characteristics 5 _____
 - All entry forms are current and complete 5 _____
- Comments: _____

Total _____

Knowledge of fiber and fabric characteristics, uses, care (40%)

- Identifies fiber characteristics that are important in apparel 10 _____
 - Identifies fiber source and production process 10 _____
 - Identifies fabric weave or knit 10 _____
 - Knowledge of fiber, fabric, and garment care requirements 10 _____
- Comments: _____

Total _____

Ability to apply knowledge (30%)

- Garment makes good use of fiber characteristics 10 _____
 - Ability to promote fiber use 10 _____
 - Garment meets competition eligibility requirements 10 _____
- Comments: _____

Total _____

Appearance, fit and fashion ability (15%)

- Garment is an appropriate fit for the body 5 _____
 - Garment and accessories fashionable and appropriate 5 _____
 - Modeling and presentation skills, poise, and grooming 5 _____
- Comments: _____

Total _____

Overall Score _____

District 9

FASHION STORYBOARD

2012 General Rules and Guidelines

OVERVIEW

The 4-H Fashion Storyboard is an industry-inspired method of displaying original designs. The best storyboards create vivid visual images that are interesting and appealing to viewers. The storyboard “tells the story” of the designer’s idea. The storyboard includes original illustrations and flats, as well as additional materials (such as photos from the Internet or magazines, paper, fabric swatches, patterns, etc.) that have influenced the unique design.

PURPOSE

The purpose of the Fashion Storyboard contest is to give 4-H members an opportunity to create a storyboard of their original design. It also provides the members an opportunity to gain knowledge of the career responsibilities of a fashion designer and illustrator, enhance creativity and originality, and develop visual communication skills.

DESIGN BRIEF

The following design brief serves as the direction for the 2012 Fashion Storyboards. 4-H members should create their Fashion Storyboard around their interpretation of the design brief.

Around the World – Use your fashion passport to explore people, places, culture and fashion around the world. Use what you learn about other parts of the globe to inspire your creation.

GENERAL RULES

1. Participation and Level of Competition. Participation is unlimited at district. All entries from 4-H members are welcome. A 4-H member may enter only **one** storyboard. Senior 4-H Members who have placed 1st, 2nd, or 3rd in their district contest in each category in the Fashion Storyboard competition will advance to Texas 4-H Roundup.

Age Division. This contest is open to all age divisions. There will be three age divisions: Junior, Intermediate, and Senior. Age is determined as of August 31, 2011.

<u>Division</u>	<u>Ages</u>	<u>Birth date between:</u>
Junior	8 years old and in 3rd grade or 9 - 10 years	Sept 1, 2000 – Aug 31, 2003
Intermediate	11-13 years of age	Sept 1, 1997 – Aug 31, 2000
Senior	14 - 18 years of age	Sept 1, 1992 – Aug 31, 1997

2. Entry of Storyboard. Each storyboard must be created by the 4-H member. Fashion Storyboard layouts should include original illustrations and flats, as well as additional materials that have influenced their unique design. 4-H members may choose to manually affix the pieces of their layout to their storyboard, or computer-generated layouts can be printed and affixed to the foam core or mat board. All items need to be securely adhered to the board. It is the 4-H member’s responsibility to affix all components of their layout for secure transportation.

3. Submission of Storyboard. Entering the competition is by submitting the Fashion Storyboard only. There will not be an interview. The Fashion Storyboard must be checked-in on Friday, May 4, 2012 by 2:00 p.m. **Do not mail.** You or a representative can check-in Storyboard at Lone Star Convention Center in Conroe, TX.



4. **Identification of Storyboard.** The Fashion Storyboard Label must be securely affixed to the back of the storyboard. The label MUST be legibly printed or typed and MUST be complete, including the answer to the Originality of Design question. The 4-H member should not put his/her name on the front.
5. **Number of garments designed.** Focus on **one** garment/outfit for the storyboard. Contestants may provide up to two (2) variations of the original design.
6. **Categories.** The following is a list of the categories and descriptions. Each storyboard should be entered into one category. A 4-H member may enter only one storyboard.
- a. **Wearable:** Clothing that can be worn. Includes items such as pants, shorts, skirts, blouses, sweaters, coats, dresses, etc.
 - b. **Accessory:** Includes items such as belts, purses, bags, hats, etc.
 - c. **Jewelry:** Includes necklaces, bracelets, rings, and earrings.
 - d. **Non-Wearable:** Includes items such as pillows, organizers, holiday items, stuffed animals, items for the home, etc.
 - e. **Pet Clothing:** Includes items that can be worn by a pet or any other animal.
7. **Scoring.** Storyboards will be evaluated based on the 4-H Fashion Storyboard Score Sheet.
8. **Each Storyboard must conform to and will be evaluated based on the following, but is not limited to:**
- a. **Visual Appeal/Creativity of Storyboard** – Storyboards should show evidence of creativity by the 4-H member. The layout of the storyboard should illustrate a theme, mood, or spirit of an idea.
 - i. A good storyboard should have a strong focal point.
 - ii. Placement of the inspirational items should allow the eye to flow across all elements of the board without distracting from the design.
 - iii. “White space” or “blank space” should be kept in consideration. Too much or too little white space detracts from the design.
 - iv. Additional photos and other materials can be used to show the inspiration for the design. These additional materials should enhance the storyboard, without taking away from the original design.
 - b. **Quality of Workmanship** – Storyboards should be neat and demonstrate quality of workmanship.
 - c. **Consistent Color Palette** – Use a consistent color palette and theme throughout the board.
 - d. **Fabric Samples, Trims, and Embellishments** – Fabric samples must be included on the board and be appropriate for the design illustrated. Trims and embellishments that would be used on the garment/outfit should be included, if applicable to the design.
 - i. If the exact fabric swatch cannot be found, a “basic swatch” may be used to illustrate fabric type (denim, linen, etc.), and the 4-H member can draw out the detail.
 - ii. Examples of trims and embellishments would be top stitching, piping, buttons, etc.
 - e. **Dimension** – Must use foam core board or mat board. Must be 20" x 30", displayed horizontally or vertically. Do not use poster board.
 - f. **Consistent Theme** – All elements are cohesive and support the design brief.
 - g. **Originality of Designs** – All design illustrations and flats should be the original work of the 4-H member. The design may be hand drawn or computer drawn. No “copying and pasting” from someone’s design as seen on the Internet, in a magazine, or other sources for the original design.

h. **Design Detail** – Should include the at least one Illustration and at least one Flat.

i. *Illustration* – Include at least one main artistic and appropriate fashion illustration. At least one illustration must be on a model/croquis. The model/croquis does not have to be an original drawing and may be traced. See the example below.

ii. *Flats* – Include at least one flat. Flats are working drawings that are not on a model/croquis that illustrate other views like you would find on a dressmaker’s pattern envelope. The flats should depict the garment from other views and details. See the example below.

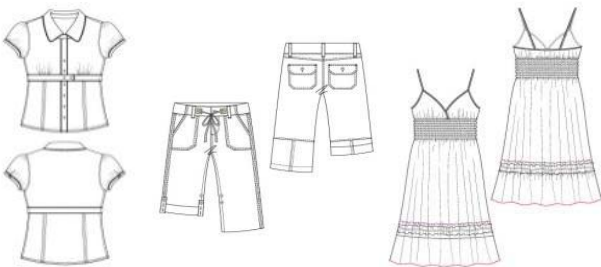
Flats combine style with information. You have created an original design and now you need to be able to create a drawing to help someone else see how to make it. Flats are drawn to define shape, fit, construction and sometimes fabrication. Flats are more factual than the same garment drawn on the figure, posed for dramatic looks. They show how a garment is to be made versus how it will be worn.

These drawings for fashion manufacturing are always drawn looking at the garment, never at an angle. Consider this your only means of communication to the seamstress; if you leave out a particular detail, the garment won’t end up being manufactured properly. The details must be exact and clearly specified.

<http://www.fashion-templates.com/technical-drawings.html>

Flats

showing other views



Pictures taken from: www.designersnexus.com

Illustration

outfit drawn on a model/croquis



Jewelry Design – flats need to include the technical aspects of a piece of jewelry including clasps, crimp beads, cord or wire, jump rings, etc.





Non-wearable can include details on construction materials and dimensions.

i. **Titles/Labels** – The title for each storyboard must be: **Around the World**

A subtitle may be used for a more personalized name of the design. Labels may be included to enhance the storyboard or to clarify a point, but they will not be required.

j. **Design Brief** – Storyboards should follow the design brief and category descriptions.

TEXAS 4-H FASHION STORYBOARD WEBSITE

http://texas4-h.tamu.edu/storyboard/index_storyboard.php

District Fashion Storyboard participants need to register on 4-H Connect by April 15, 2012 and check their Storyboard in on Friday, May 4, 2012 between 11:00 - 2:00 p.m.

Participants do not have to be present for judging.

Awards will be presented Friday, May 4th, 2012 during Style Show and Evening Events that start at 6:00 p.m.

4-H FASHION STORYBOARD LABEL

This label should be cut out and affixed to the back of each storyboard. Label details must be neatly printed or typed. Label information should be COMPLETE!

4-H FASHION STORYBOARD LABEL


Age Division *(please check one)*: Junior Intermediate Senior

Category *(please check one)*: Wearable Accessory Jewelry Non-wearable Pet Clothing

County: _____

Name: _____

Birthday: _____

4-H Age *(as of 8/31/11)*: _____

I do hereby consent and agree that Texas AgriLife Extension Service, Texas 4-H and Youth Development Program staff have permission to take photographs and/or record video and/or audio of me and/or my property and to use these for 4-H Youth Development educational, promotional, and/or marketing materials. I further do hereby give the right to exhibit any such works publicly or privately, including posting on the Texas 4-H and Youth Development Program website. I waive any rights, claims, or interests I may have to control the use of my identity, the identity of the subject(s), or likeness in the photographs, video, or audio and agree that any uses described herein may be made without compensation or additional consideration. I represent that I have read and understand the foregoing statement, and I am competent to execute this agreement.

I have read and understand the foregoing statement, and I am competent to execute this agreement.

Name *(please print)*: _____

Signature: _____ Date: _____

Parent/Guardian Name *(please print)*: _____

Signature: _____ Date: _____

Agent Name: _____

Agent Signature: _____

Originality of Design

In 100 words or less, answer the following prompt in regards to originality:
Where did you get the idea for your design? What was your inspiration? What makes your design different from others on the market?

Fashion Storyboard Score Sheet

Name _____ County _____ District _____

Age Division _____ Junior _____ Intermediate _____ Senior _____

Category _____ Wearable _____ Accessory _____ Non-Wearable _____ Pet Clothing _____

LAYOUT		COMMENTS	EXCELLENT (E)	GOOD (G)	FAIR (F)	NEEDS IMPROVEMENT (N)
LAYOUT OF STORYBOARD	Creativity E= Highly creative, imaginative G= Some evidence of creativity F= Little evidence of creativity N= No evidence of creativity					
	Quality of Workmanship E= Very good quality, very neat and structured G= Fair quality, somewhat neat F= Marginal quality of workmanship N= Low quality, messy, unstructured					
	Color Palette E= Color theme consistent throughout board N= Color theme inconsistent throughout board					
	Fabric Samples, Trims, and Embellishments E= Samples/Trims provided, appropriate for design G= Samples/Trims provided, somewhat appropriate F= Samples/Trims provided, inappropriate for design N= No Samples/Trims included					
	Dimensions of Storyboard E= Correct board dimension N= Incorrect board dimension					
	Consistent Theme E= Strong theme throughout board N= Indecisive theme					
ILLUSTRATIONS & FLATS	Originality E= Highly original design G= Contains both creative elements and copies F= Some evidence of originality N= Little evidence of originality					
	Design Detail E= In-depth detail of seams, lines, fabrics G= All seams and style lines included, little detail F= Minimal lines and seams shown N= Little or no detail in design					
	Titles/Labels E= Used correctly, enhances board G= Used somewhat correctly F= Used incorrectly, too much, detracts from board N= No Title used					
	Design Brief E= Excellent design for brief G= Meets brief, improvement needed F= Somewhat meets brief, needs improvement N= Design does not meet brief					

