

Brazos County 4-H Connection

County Countdown Page

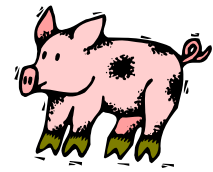
District Dates Page

State Scoops Page

COUNTY COUNTDOWN

San Antonio & San Angelo Stock Show Meeting

- When: January 31, 2013 6:30-8PM
- Where: County Extension Office
- Why: To coordinate car pool planning & pass hand outs



4H Clothing & Textiles County Workshop

- When: February 4, 2013 6-8PM
- Where: State 4H Office (Hwy 6 South Access road)
- Project: Mini Stuffed Heart Pillows
- What to Bring: Sewing machine and sewing kit (scissors, fabric maker, needle and thread for hand sewing, various thread colors: red, pink, white)
- Supply Fee of \$1.00 (all fabric and stuffing will be provided)



2013 BCYLA Queens Contest

First meeting will be January 30 at 7pm at First United Methodist Church, Bryan in room 111 of the Christian Life Center. Please mail, email or bring the entry form with you to the meeting along with a close up picture for advertising. The picture needs to be a close up so that it shows up well when printed. The entry form is available online at www.bcyala.net in the rule book. Please call or email JoAnn Coates with any questions.



<http://brazos.agrilife.org/> • 2619 Highway 21 West, Bryan 77803 • 979.823.0129

Educational programs of the Texas AgriLife Extension Service are open to all people without regard to race, color, sex, disability, religion, age, or national origin. The Texas A&M University System, U.S. Department of Agriculture and the County Commissioners Courts of Texas Cooperating. Individuals with disabilities who require assistance in order to participate are encouraged to contact our office.



COUNTY COUNTDOWN

2013 Brazos County Youth Livestock Show Heifer Entry

Entry deadline: February 1, 2013

Cost: \$15.00 Per head

Exhibitor must be a member of BCYLS Association. There is a \$10.00 membership fee for individuals and \$25.00 for a family membership. Please attach a membership application if you are not a BCYLS member to the entry form. Membership applications & heifer entry forms are available online at www.BCYLS.net

- All heifers must be registered in your name prior to November 1, 2012 (Please check this before you enter. If you show the heifer at the spring majors, you are OK).

Mail Entries to: Larry White

Rudder High School

3251 Austin's Colony Parkway

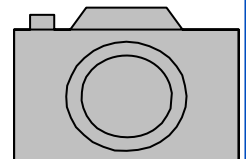
Bryan, TX 77808

4-H EVENT ANNOUNCEMENT – Brazos County Photography Contest

For Junior, Intermediate, and Senior age 4-Hers interested in all things photography. All photos will be entered online thru Shutterfly. For details on how to enter, pay, get submission forms and a copy of the Brazos County Photography Contest Rules and Guidelines, go to our website at

http://texas4h-tamu-edu.wengine.netdna-cdn.com/files/2012/09/12-13_Photo_Rules.pdf

Deadline for entering is **Monday, February 11, 2013 by 4:00 PM**. There is an entry fee of \$1.00 per picture which must be submitted to our office along with the Brazos County 4-H Photography Submission Form (filled in) before the deadline.



Home & Garden Show Petting Zoo

4-Her's we need you and your animals at the Home & Garden Show on February 23 from 9:30am-5:30pm & February 24 from 11:30am-5:30pm at the Brazos Expo Center we are looking for kittens, chickens, turkeys, rabbits, sheep, goats, pigs, cattle, etc. Please contact Ashley Skinner adfink@ag.tamu.edu if you are interested in helping out with this great community service project.



COUNTY COUNTDOWN

2013 BCYLS Broiler Pick Up

- Pick up will be February 6, 2011 at Pearce Pavilion
- Make checks payable to: BCYLA



2013 Brazos County Youth Livestock Show Association Scholarship

Graduating seniors wishing to apply will need to complete the application using this fillable form. Please do not add any additional sheets other than the narrative and required paperwork. Please note that scholarship applications should be completed in full and returned (or postmarked) no later than February 12, 2013, to the Brazos County Office of Texas Agrilife Extension Service, 2619 Highway 21 West, Bryan, Texas 77803. For more information, please call (979) 823-0129. You can find the application at www.BCYLA.net

2013 BCYLS Rabbit Validation

Saturday, February 16, 2013

10-11AM Pearce Pavilion



Expect to pay BCYLA Membership fees and BCYLS Market Rabbit entry fees

BCYLA Family membership—\$25.00

BCYLA Individual membership—\$10.00

BCYLS Market Rabbits (maximum of 2 pens per exhibitor) - \$20.00 per pen

Late entries for market animals will only be accepted up to two weeks after validation deadline at a penalty of ten (10) times the specified entry fee.

Questions:

Contact Julie Bishop— bishops.momma@yahoo.com

Beth Lawrence— bj.lawrence@verizon.net

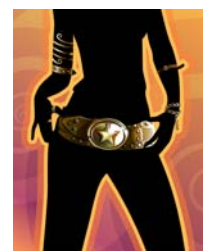
2013 Brazos County 4-H Fashion Show & Story Board Contest

When: Friday, April 5, 2013 5:30PM

Where: Location TBA

Cost: \$5 entry fee

Entry deadline: April 1, 2013





COUNTY COUNTDOWN

2013 Houston Livestock Show & Rodeo Area Go Texas Scholarship Guidelines

Important dates to remember:

- March 1, 2013—Online Scholarship Application Due
- March 6, 2013—Supplemental documentation packet postmarked
- May 2013—Recipient selection notification
- May 2013—Awards Banquet

In 2013 The Houston Livestock Show and Rodeo will award 72 four-year, \$18,000 Area Go Texan Scholarships to outstanding students graduating from public school districts in counties participating in the Show's Area Go Texan Program.

2013 TAMU Horse Judging Camp

- Dates: June 5th-7th
June 26th-28th
- Where: Texas A& M University, College Station, TX
- For more information please contact: Dr. Clay Cavinder
(979)-458-2967
cac@tamu.edu
Or
<http://animalscience.tamu.edu/horsejudgingcamp>



Habitat for Humanity Needs YOU!

There are four H's in 4-H let's see if we can add another one! Habitat for Humanity needs groups of volunteers to make and serve lunches to the workers on the Habitat for Humanity work sites. Meals are needed beginning January 12th and every Saturday following. A meal would need to be any sort of boxed lunch that could feed about 20-25 people. Sandwiches with chips and fruit are great but it is up to your club or project group. The lunches would need to be delivered around 11:15-11:30. The work sites vary as to where you would be delivering, so if your project group or 4-H club would like to do this or y'all need more information please email me at julialawrence@verizon.net. I hope to hear from you soon. This is a great way to get involved with Habitat for Humanity.



STATE COUNTDOWN

2013 S.A.L.E. Jr. Shootout

February 8-9, 2013



The San Antonio Livestock Exposition is hosting the 1st annual Junior Shootout as part of the 2013 San Antonio Stock Show & Rodeo. It will be a 100 bird, youth trap shoot, held at the National Shooting Complex in San

Antonio. The shootout is open to all 4H members who are members of an organized 4-H shooting club.

Scholarships and prizes will be awarded in several divisions

For more information and rules go to www.sarodeo.com or contact us at the office at 979-823-0129

4-H Shooting Sports Ambassador Applications Available

Texas 4-H Shooting Sports Ambassadors represent 4-H specifically 4-H Shooting Sports for public relations purposes at special events such as donor/supporter functions and with general public, peer groups, 4-H groups, community service groups, schools and media contacts. They serve as spokespersons for the 4-H Shooting Sports program, helping to make 4-H shooting sports programs more visible.

To find all the details and complete an application go to:

<http://texas4-h.tamu.edu/oneday>



2013 Texas 4-H Roundup Theme & Logo Contest

Requirements: The logo submitted may be made up of no more than four colors. Theme must have "Texas 4-H Roundup" located in it. Theme must have 2013 for its date. Images may be hand drawn or computer generated. Electronic images must be in .jpg format. If selected, images may be modified slightly for printing purposes.

**Let's Cook Something!!!****Mexican Pinata Salad****Ingredients:**

1 pound extra lean ground beef, browned and drained
2 medium tomatoes, diced
1 medium lettuce, chopped
1/2 cup reduced fat cheddar cheese, grated
2 cups pinto beans, prepared or canned
Baked whole wheat tortilla chips or corn tortillas (optional)
Garlic, salt and pepper to taste

Directions

Wash your hands and clean your cooking area. Brown ground beef in skillet and drain thoroughly. Season beef with garlic, pepper and salt, to taste. Chop lettuce, dice tomatoes and grate cheese. Layer beans, meat, lettuce, tomatoes, and cheese in a salad bowl, do not toss. Serve immediately

Preparation Time: 20 Minutes

Cook Time: 10-15 Minutes

Cost Per Serving: \$1.03

Servings: 6

Serving Size: 1 cup

Calories: 200

Jerod Meurer
County Extension Agent
4-H and Youth Development

Arvitta Scott
CEP Agent
4-H & Youth Development

Dustin Coufal
County Extension Agent
Ag & Natural Resources

Flora Williams
County Extension Agent
Family & Consumer Sciences

Ashley Skinner
County Extension Assistant
4-H Program Assistant

As always Better Living for Texans (BLT) can provide food stamp eligible and other low income families with nutrition, food safety, and food resource management information. So for more information or any questions, contact Teresa Rivera at the Brazos County Extension Office: 979-823-0129 or email at trivera@ag.tamu.edu. In accordance with federal law and U.S Department of Agriculture's policy, Better Living for Texans Food Stamp Nutrition Education Program is prohibited from discriminating on the basis of race, color, national origin, sex, age, religion, political beliefs, or disability.

To file a complaint of discrimination, write USDA, Director of Civil Rights, Room 326-W, Whitten Building, 1400 Independence Avenue, SW, Washington, D.C. 20250 or call (202) 720-5964 (voice or TDD). USDA is an equal opportunity provider and employer.

Brazos County 4-H Calendar February 2013

TEXAS A&M
AGRI LIFE
EXTENSION

Brazos County



4-H Connection

Color Legend:
Black—County
Blue—District
Green—State

NOTES:

Fort Worth Stock Show:
January 18-February 9

San Antonio Stock Show:
February 7-24

Houston Stock Show:
February 25-March 17



Sun	Mon	Tue	Wed	Thu	Fri	Sat
3	4 Co. Clothing/ Textile work- shop @ St. 4-H office 6-8pm	5	6 Co. Broiler pickup @ Pearce Pav. 4-H Day at the Capitol	7	8	9
10	11 Co. Photo entries/form/ fees due	12 BCYLS Scholarship Apps due in County office	13 TEEA Scholarship apps due in County office (tentative)	14	15 Collegiate Scholarship apps due in County office	16
17	18	19 Council Officer mtg. @ Brazos Center	20	21	22	23
24	25	26	27 Houston/Austin LS pass hand- out 6:30-8pm Ext. office	28		